

# NWL Training Hub Newsletter

w/c 26<sup>th</sup> August 2024



## News and Updates

### Express your interest this week

#### Are you new to GP partnership (under 3 years), work within a NWL practice and could benefit from a 121 informal catch up with another NWL GP partner?

If the answer is yes, then this might be for you. As part of the NWL GP Partnership project we are offering 16 New to Partnership GPs the opportunity to have an online 1 hour informal catch up, with another NWL GP Partner.

The informal catch up itself will have no dedicated agenda, however the hope would be that you could use this opportunity to:

- Ask any advice or guidance that you might have/need
- Ask any questions you may have about being part of a partnership or being a partner
- Bounce off any potential innovative ideas you have
- Learn from any experiences they may have to share with you

The offer will be for 16 GPs in total (2 per borough). If you are interested, then please complete the below questions and submit back to The Hillingdon Training Hub Team who will be leading on this - email address [hillconfed.traininghub@nhs.net](mailto:hillconfed.traininghub@nhs.net)

Name, GP Practice, Borough, How long have you been a GP Partner

Please could we have your expression of interest back by Friday 30<sup>th</sup> August 2024.

#### The Population Health Management & Health Equity Academy

2 half days 14th & 28th October from 9:30 to 12:00 on both days [book here](#)

Training will cover:

- an overview of co-production, what it is/isn't in its relationship to engagement and best practice principles
- an understanding of the positive benefits/outcomes achieved through implementing an asset-based approach
- practical approaches and techniques to support/enable/deliver co-production in partnership with NW London populations (e.g. appreciative enquiry, deliberative approaches, mini publics etc)
- exploration of practical considerations such as planning, timescales, asset/stakeholder mapping and evaluation
- an opportunity to share and discuss best practice and local examples of good co-production, alongside learning from when it has not been so successful/pitfalls to avoid
- practical examples on how to approach difficult decision-making without losing power-sharing principles

#### Education Grants for Nurses, Nursing Associates, Healthcare Support Workers and Student Nurses

Closing date 18<sup>th</sup> October

Nurses can apply to receive some development support of up to £2,500 and put it towards a course. Full details of the grants available can be found here; <https://rcnfoundation.rcn.org.uk/Grants-and-funding/Educational-grants> or in [this flyer](#).

#### Independent Prescribing Opportunity

If you have been working as a Practice Nurse or Paramedic for more than 2 years and are starting to wonder what to do next, you have several options to think about. The following may help to guide your decision about your next steps; [History Taking & Physical Assessment and Independent Prescribing Course](#)

#### Lipid management educational sessions

From August 2024 onwards, a series of non-promotional lipid management educational sessions will be delivered by Novartis Clinical Educators for Primary Care Networks in Northwest London. The sessions are intended for healthcare professionals only, aiming for an attendance of 5 to 10 attendees to allow sufficient time for interactions and questions.

The Clinical Educators are part of the medical team at Novartis and the role entails delivering free, non-promotional, educational sessions on holistic cardiovascular risk management, with a particular focus on lipid management.

The contents of the session include an overview of atherosclerotic cardiovascular disease (ASCVD), its effects on the healthcare system and scale of the problem, practicalities around interpreting lipid panels and the relationship between LDL and ASCVD, mechanism of action of available lipid lowering therapies, guidelines and QoF recommendations for lipid management, and patient identification tools in primary care.

If you would like to register your interest and request a session for your PCN please contact [catherine.caldwell@imperialcollegehealthpartners.com](mailto:catherine.caldwell@imperialcollegehealthpartners.com) or [amar.singh@imperialcollegehealthpartners.com](mailto:amar.singh@imperialcollegehealthpartners.com)

#### HCA Diabetes training

2 dates available, training is online you only need to attend one session.

- 11<sup>th</sup> December 2024, 08:50 to 16:00 – [book here](#)
- 12<sup>th</sup> March 2025, 08:50 to 16:00 – [book here](#)

This training is for non-registered clinical staff, training can also be attended as an update for those HCAs who have already attended HCA diabetes training before and need a refresher.

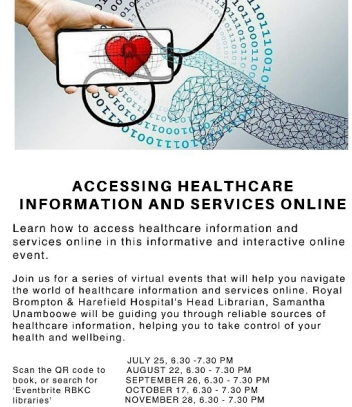
#### Accessing Healthcare Information Online

Help your patients to learn how to access healthcare information and services online with this series of virtual learning events find out more via [the flyer](#) or book below:

- 26<sup>th</sup> September from 18:30 to 19:30 – [book here](#)
- 17<sup>th</sup> October from 18:30 to 19:30 – [book here](#)
- 28<sup>th</sup> November from 18:30 to 19:30 – [book here](#)

Additionally, [Get Online Week](#) will take place on 14-20 October 2024, which is the UK's largest digital inclusion campaign with the aim of helping people discover the benefits of being online and build their confidence in using the internet. Just during this week if there is interest from GP surgeries, we can run additional online sessions to cater to your unique community needs that will allow attendees to experience and understand the benefits of getting online. The purpose of this is to support the fact that everyone deserves an equal opportunity to benefit from being online – and that free support is out there.

*If you would like to host a collaborative session for your patient communities, please contact [katarina.durisova@nhs.net](mailto:katarina.durisova@nhs.net) and we will put you in touch with the relevant team.*



#### Help us shape our new EDI improvement plan for primary care

NHS England is inviting colleagues from all four sectors of primary care, in both clinical and non-clinical roles, to help shape the new Equality Diversity Inclusion (EDI) Improvement Plan for primary care. We are hosting a number of virtual engagement sessions where you can hear about the work underway. During these sessions, you will have the opportunity to contribute to this exciting piece of work, share your reflections and help to co-design and shape this new national resource. You can register for one of three dates:

- 17 September 2024, 10.00-11.30am
- 2 October 2024, 1.00-2.30pm
- 7 November 2024, 12.00-1.30pm

If you have any questions, please contact the EDI team at [england.nationaleidteam@nhs.net](mailto:england.nationaleidteam@nhs.net).

#### Burnout group - NW London Keeping Well

Is work stress affecting your mental health and leading to you feeling burnt out? Keeping Well North West London will be facilitating the Burnout Group which will be running for 6 consecutive weeks. Starting on Wednesday 11 September 2024, 3.30 – 5pm.

The sessions will incorporate Cognitive-Behavioural Therapy (CBT) and Acceptance and Commitment Therapy (ACT) protocols as a means of promoting positive wellbeing using psychological techniques, reflective exercises and group discussions.

Spaces are limited for these sessions and staff members can use the [self-referral form](#) and select the option " Burnout group". Please note that this is a closed group and attendees are encouraged to attend every session.



#### This Week

- **Unlocking the potential of provider collaboratives in primary care** 28 Aug, 12:00-13:00 [book here](#)
- **Type 2 Diabetes Path to Remission Programme: A deeper look into the service user journey** Wed 28 Aug, 16:00, [Join here](#)
- **Cyber Domestic Abuse, Stalking & Harassment Training for Practitioners** 29 Aug, 13:00-14:30: [Register here](#)

## NWL Training

## Expressions of Interest forms

### SSSA Training and Update

**SSSA Training, 2 day online course**

This is a course for GPNs who have not completed any mentorship qualifications (e.g. ENB 998) in the past, and who are interested in supporting learners in practice. Delegates must attend both dates to successfully finalise training.

- Cohort 1: Fri 13th September 09:00 – 15:30 and Fri 4th October 09:00 – 14:00 [Book here](#)
- Cohort 2: Thu 26th September 09:00 – 15:30 and Thu 28th November 09:00 – 14:00 [Book here](#)
- Cohort 3: Mon 25th November 09:00 – 15:30 and Mon 16th December 09:00 – 14:00 [Book here](#)

**SSSA Annual Update**

This course is suitable if you have already attended mentorship preparation training (e.g. ENB 998). This update provides a refresher of the knowledge, skills and behaviours needed to support learners to become outstanding nurses and midwives.

- 6<sup>th</sup> September 9:00 to 11:30 – [Book here](#)
- 17<sup>th</sup> October 9:00 to 11:30 – [Book here](#)

For some training we don't currently have training dates arranged, if this is training you would like please complete the relevant expression of interest form and we will be able to run training based on demand. Those who have expressed interest will also be notified when dates are arranged.

- [Advanced Diabetes PITstop](#)
- [Anticoagulation Training - New to anticoagulation](#)
- [Mental Health First Aid](#)
- [Interpreting ECG Training - New to Interpreting](#)
- [Interpreting ECG Training - Refresher](#)
- [Paediatric Phlebotomy](#)
- [Ring Pessary](#)

## Supervisor courses

NWL Training Hub holds a waitlist for both the multi-professional and GP Supervisor courses, if you would like to attend please complete the relevant application form.

**Multi-professional Supervisor Course** application form  
**4 sessions, dates as follows; 10<sup>th</sup> Sep, 9<sup>th</sup> Oct, 14<sup>th</sup> Nov, 10<sup>th</sup> Dec** Venue TBC.

**GP Supervisor Course** application form  
September Cohorts - fully booked.  
Complete the application form to be added to the waitlist for the next available cohorts.

**Pharmacy Educational Supervisor Training programme** – available via eLFH

## Useful links and Resources

- [Knowledge and Library Resources for GP and Practice Teams](#)
- [Greener NHS – Resources for a more sustainable NHS](#)
- [Survival Toolkit](#)
- [Supported Return to Training](#)
- [Podcast Learning Library](#)
- [Primary Care Resources](#)
- [GP Resources](#)
- [Webinar Recordings](#)

## Other Training / Webinars / Events

#### NHS Type 2 Diabetes Path to Remission Programme Webinars

Counterweight are running webinars to provide primary care with the necessary information to refer into the path to remission programme and will be running 2 webinar topics over a 4 week long period each. Dates and links below:

- **Topic 2: A deeper look into the service user journey**
- Wed, 28 Aug 2024, 16:00, [Join webinar here](#)
- Wed, 4 Sep 2024, 13:00, [Join webinar here](#)
- Tue, 10 Sep 2024, 10:00, [Join webinar here](#)

**General Practice Webinar**

- 5th September 17:00 to 18:00 [Register here](#)

Agenda will be shared closer to the time of the webinar.

**Webinar: Improving Consistency in IBS Care**

- 10<sup>th</sup> September 13:00 – 14:00 [Register here](#)

This clinical teaching encompasses how to make a positive diagnosis of IBS using current criteria, how to avoid pitfalls in clinical care, where IBS fits in the guidelines and the emerging evidence for Probiotics.

**Benefits of patient safety in primary care – what's in it for you?**

- 13<sup>th</sup> September 12:30 to 14:00 [Register here](#).

NHS Resolution's Safety and Learning team, in collaboration with Health Services Safety Investigations Body and NHS England, are hosting an interactive virtual forum on the benefits of implementing safety science in primary care, responding to patient safety incidents and the support available to staff working in general practice and primary care.

The forum will be of interest to both clinical and non-clinical staff involved in patient care across primary and urgent care.

**Clinical and Ethical Approaches to Deprescribing and Mental Health Polypharmacy in Primary Care**

- 18<sup>th</sup> September via Teams 12:00 – 14:00 [Register here](#).

In this session we will focus on understanding and managing polypharmacy in primary care, with an emphasis on deprescribing and mental health polypharmacy. This masterclass aims to equip healthcare professionals with practical strategies to optimise medication regimens, improve patient outcomes, and address the complexities associated with polypharmacy.

**Cancer Community of Practice Webinar : Cancer risk assessment**

- 18<sup>th</sup> September, 12:30 – 13:30 – [book here](#)

The session will cover:

- What is the Cancer Risk Assessment Service?
- Reasons for assessing cancer risk based on family history
- How does the service benefit individuals?
- Recognising the need for a family history assessment or a genetics referral
- Making every contact count – the Nurses role

**Updates on the Type 2 Diabetes in the Young (T2DAY) programme**

This webinar is more in-depth training on the EOT2D/T2DAY extended review service with Dr Shivani and is not about rolling out the Diabetes Level 2 MDTs as initially advertised.

The training will be a deep five into the five key components of the Early Onset Type 2 Diabetes (EOT2D)/T2DAY extended reviews. The webinar aims to address any grey areas that may require further discussion or input as well as pathway queries followed by a Q&A session.

- 19<sup>th</sup> September 12:30 to 13:30 [Register here](#)
- 2<sup>nd</sup> October 17:00 to 18:00 [Register here](#)

**Working with people and communities to improve general practice in primary care**

- 19<sup>th</sup> September, 15:30 to 16:30 [Register here](#)

This webinar will act as an introduction to NHS England's course "Working with People and Communities to Improve General Practice in Primary Care".

**7<sup>th</sup> NWL Polypharmacy Community of Practice**

- Thursday 26<sup>th</sup> September 2024 from 13:00 – 14:00. [Register here](#).

The NWL Polypharmacy Community of Practice (CoP) is looking to expand the reach and diversity of its members. Problematic polypharmacy attributes costs to the healthcare system as well as diminishes care for the patient, most of this is preventable.

To join the CoP, you need to be able to commit one hour once a quarter, to join a virtual meet.

For further information please contact [catherine.caldwell@imperialcollegehealthpartners.com](mailto:catherine.caldwell@imperialcollegehealthpartners.com)

**Webinar: Library Services - NHS Library and Knowledge Hub**

- 26th September via Teams 13:00 – 14:00 [Register here](#).

Unlock cutting-edge insights with the NHS Library and Knowledge Hub—the ultimate online resource for all NHS healthcare professionals accessible via your NHS OpenAthens account. Dive into an extensive collection of medical journals, research papers, and clinical guidelines accessible anytime, anywhere. Streamline your decision-making with intuitive search tools and stay updated with the latest advancements in your field. Elevate your practice and patient care with this indispensable, tailored platform

**NHSE London Becoming an Advanced Practitioner; Unlocking Your Career Potential**

- 27th September 2024 from 11:30 – 13:00 [Book here](#)

The webinar is aimed at providing a better understanding of advanced practice roles, the career benefits of becoming an Advanced Practitioner (AP), and how to get started.

**Webinar: NWL Respiratory**

- 9th October via Teams 13:00 – 14:00 [Register here](#).

We will cover:

- Identifying risk: WSIC Tools and UCLP searches
- Managing risk in practice
- How to use UCP for high risk respiratory patients

**SRH Essentials for Primary Care**

16<sup>th</sup> November, online, 8:30 – 16:30 [Register here](#).

This one day virtual course covers the following:

- Develop the skills and confidence to consult with patients about their sexual and reproductive healthcare needs
- Recommend an appropriate method of contraceptive method
- Review the COC, POP and injection contraceptive methods
- Carry out sexual health risk assessments
- Identify when patients are at risk of STIs

\*Please note this training is £170pp and is not funded via NWL TH. You can seek funding locally from CPD funds, your practice or self-fund.

**Immunisers webinars**

Various dates and sessions from September 24 to January 25

Immunisers in primary care in London can access immunisation training. The series of webinars are designed to support immunisers to fulfil the requirement for annual immunisation updates and are free to access. [Find more information including dates here](#).

**Polypharmacy: medicines and the risk of falls in older people lunchtime masterclass**

- 10<sup>th</sup> October, 12:00 to 13:30 [Register here](#)

Open to GPs, Pharmacists, Nurse prescribers and other interested health professionals this webinar will cover;

- The importance of medication in falls causation.
- How medication reviews can reduce the risk of falls.
- Information and guidance that can be used when conducting a falls related medication review.

**Workforce Planning & Transformation Training**

The Workforce Planning Team at NHS England would like to share their new Workforce Planning & Transformation Training Offer brochure which provides details and all information required on how to apply for the variety of free training on offer.

[Click here to view and download brochure](#).

**Polypharmacy Action Learning Set workshops**

- [Cohort nineteen](#) – 11 Sep, 25 Sep, 9 Oct
- [Cohort twenty](#) – 16 Oct, 6 Nov, 20 Nov
- [Cohort twenty-one](#) – 13 Nov, 27 Nov, 11 Dec
- [Cohort twenty-two](#) – 22 Jan, 5 Feb, 26 Feb 2025

This Action Learning Set (ALS) will help build GP and prescribing health care professionals' confidence in, and understanding of, the complex issue surrounding and stopping inappropriate medicines safely.

**The National Capability Framework for the care of children and young people with asthma**

[aall staff](#) need to do this training. All Modules are free and are accessed via the link here; <https://www.e-ifu.org.uk/programmes/children-and-young-peoples-asthma/>. View the [list of Tiers](#) to see what level of training you require.

### Enhanced Services

**Diabetes Updates**

**Advanced Diabetes PitStop Update**

Face to Face: SE1 1GA 18<sup>th</sup> September 2024 from 8:50 – 16:30  
[more details and express your interest here](#).

**Update Diabetes PitStop For Nursing staff**

There are 2 dates available - you only need to attend 1

- Thursday 19<sup>th</sup> September 2024 13:00 – 17:00 [Apply here](#)
- Wednesday 16<sup>th</sup> October 2024 09:00 – 13:00 [Apply here](#)

**Advanced Diabetes Course**

For GPNs and Pharmacists – you must have attended the foundation course before attending this advanced course.

GPs – please be sure to provide a summary of your diabetes related work undertaken.  
[Express your interest here](#)

**Diabetes Foot Care**

Face to Face: The Irish Cultural Centre, Hammersmith

- 24th October 2024 from 9:15 – 16:30 [BOOK HERE](#)

**Paediatric Phlebotomy**

This training is for Nurses, HCAs & Phlebotomists. HCAs & Phlebotomists need to have a Care Certificate.

- 11<sup>th</sup> September from 9:00 – 14:00 – [Apply here](#)
- 3<sup>rd</sup> October from 9:00 – 14:00 [apply here](#)
- 23<sup>rd</sup> October from 9:00 – 14:00 [apply here](#)

**Performing ECG**

Face to Face: The Irish Cultural Centre, Hammersmith

- 3rd September 2024 from 9:15 – 16:30 [Book here](#)

This training if for HCAs, GPAs, pharmacists, nurses can attend if they require this training

**Interpreting ECG**

Face to Face: The Irish Cultural Centre, Hammersmith

- 11<sup>th</sup> November 2024 from 9:00 – 16:30 [Book here](#)

This training if for GPs and ACPs only.

**SRH Essentials Course, CPD accredited**

A one-day training course for nurses & AHPs new to SRH designed by the Faculty of Sexual and Reproductive Healthcare to enable those working in primary care to manage consultations about contraception and STIs with confidence. This is suitable for Nurses & AHPs who have been working in primary care but have only undertaken a small amount of training in this area. [Find out more and register your interest](#)

**Coil Fitting**

There is a new Enhanced Service to provide the fitting of coils for non-contraceptive purposes. It is hoped that eventually every PCN will have a clinician that is able to fit coils for their PCN population. To find out full details please visit our website [here](#).

**Refresher interpreting ECG**

24<sup>th</sup> September 2024 from 9:30 to 11:00. Online [Register here](#)

The refresher ECG course re-introduces a systematic approach for GPs who interpret ECGs to adopt a system that ensures every ECG is interpreted correctly every time. The focus will be on common scenarios that cause concern in primary care with a focus on red-flag ECGs. Open to GPs and ACPs who have attended the interpreting ECG course.

**Enhanced Services Webinar Recordings;**

- [Respiratory ES Specification](#)
- [Pulmonary Rehabilitation](#)
- [ABPM](#)
- [Anticoagulation Update](#)
- [Diabetes Training Oct 23](#)
- [Preventing Diabetes: NDPP Updates](#)

### ARRS Training Offers

**Diabetes Half Day Update**

Open to any ARRS clinical staff who have already completed a Foundation Programme.  
[Click here to find out more and express your interest \(Eol\)](#) in attending the dates available;

- Wed 4<sup>th</sup> September from 13:00 to 17:00
- Thu 12<sup>th</sup> September from 9:00 to 13:00

Staff who wish to attend must either [complete the Eol](#) or [email Jon Ord](#) with your: Name, Email, Role, GP Practice, PCN, Borough, Employer.

**2 or 4 Day Coaching Course**

Open to ARRS Social Prescribing Link Workers, Care Coordinators and Health & Wellbeing Coaches

NWL Training Hub is supported further new recruitment and personalised Care roles by funding a DES required PCI coaching course – either the 2 day or 4 day course dependant on the role.

Staff who wish to attend must either [complete the Eol](#) or [email Jon Ord](#) with your: Name, Email, Role, GP Practice, PCN, Borough, Employer.

**Pitstop Foundation Level Diabetes Course**

This course is now open to any ARRS clinical staff including Pharmacists, Paramedics, Physician Associate, Pharmacy Technician, Nurse Associate & Advanced Clinical Practitioners.

Staff who wish to attend must either [complete the Eol](#) or [email Jon Ord](#) with your: Name, Email, Role, GP Practice, PCN, Borough, Employer.

**Mental Health in Primary Care Course for ARRS Staff**

NWL Training Hub has been working with the University of Hertfordshire to provide a new course around different areas of Mental Health within Primary Care and the patients they may interact with.

Staff who wish to attend must either [complete the Eol](#) or [email Jon Ord](#) with your: Name, Email, Role, GP Practice, PCN, Borough, Employer.

**Suicide First Aid Lite for Personalised Care Roles**

Open to Social Prescribing Link Workers, Health & Wellbeing Coaches & Care Coordinators.

Staff who wish to attend must either [complete the Eol](#) or [email Jon Ord](#) with your: Name, Email, Role, GP Practice, PCN, Borough, Employer.

**GP Assistant Programme**

Only open to GP Assistants. Cohort 3 dates:

The course will consist of the following training days:

- Day 1 – Care Certificate Day 1 - 24<sup>th</sup> Sep, Online
- Day 2 – Care Certificate Day 2 - 1<sup>st</sup> Oct, Online
- Day 3 – Care Certificate Day 3 - 10<sup>th</sup> Oct, Online
- Day 4 – Physiological Measurements Day 1 - 23<sup>rd</sup> Oct, Online
- Day 5 – Physiological Measurements Day 2 - 31<sup>st</sup> Oct, Face to Face
- Day 6 – Phlebotomy - 13<sup>th</sup> Nov, Face to Face
- Day 7 – Clinical skills - 28<sup>th</sup> Nov, Face to Face

Face to Face sessions will take place at *Sobus Community Hub - 20 Dawes Road, London SW6 7EN*.

Staff who wish to attend must either [complete the Eol](#) or [email Jon Ord](#) with your: Name, Email, Role, GP Practice, PCN, Borough, Employer

Please do so no later than 2<sup>nd</sup> September so numbers can be confirmed.

Thank you from the NWL Training Hub Team

