

NWL Training Hub

Newsletter

w/c 21st July 2025

News and Updates

Review and book all NWL Training Events:

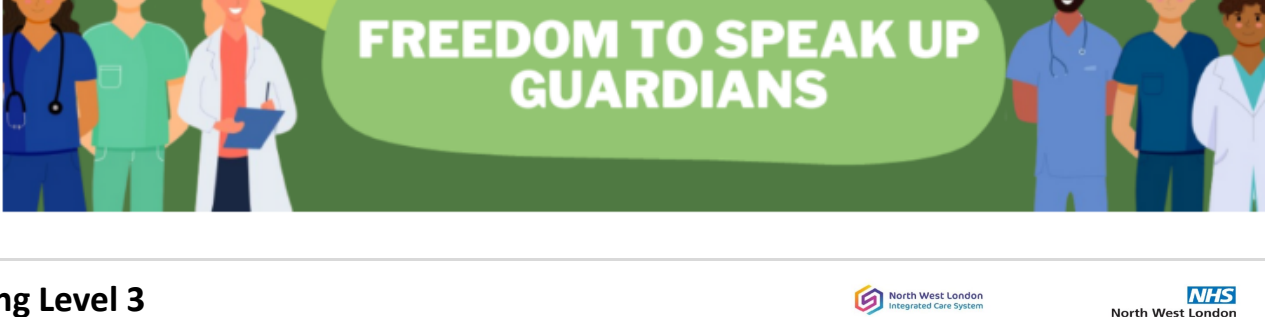
nwltraininghub.co.uk/events/

Freedom to Speak Up Guardians

North West London Training Hubs have launched Freedom to Speak Up Guardians (FTSUGs) within Primary Care. FTSUGs are a cohort of staff across NWL Primary Care, primarily within the Training Hubs, who have completed the necessary national training to support the workforce in speaking up.

What is Speaking Up? - FTSUGs support staff to speak up when they feel that they are unable to do so in other ways. You can speak up about anything that affects you, patient care or your working life. This could be about anything that is troubling you including inappropriate attitudes and behaviours, bullying and / or harassment.

How to Speak Up? Email nwl.speakupguardian@nhs.net with your concern or query and you will be matched with a guardian. Note that conversations remain confidential, and we will work with you to support decisions pertaining to next steps you may wish to take. [Find out more](#)



Safeguarding Children Training Level 3

-29th October 09:30-16:30

Training for clinical staff working with children and young people.

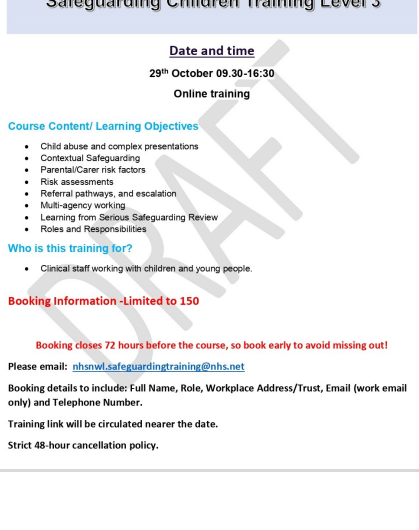
To book please email: nhsnwl.safeguardingtraining@nhs.net

Include: Full Name, Role, Workplace Address, Email (work email only) and Telephone Number

Course Content/ Learning objectives:

- Child abuse and complex presentations
- Contextual Safeguarding
- Parental/Carer risk factors
- Risk assessments
- Referral pathways, and escalation
- Multi-agency working
- Learning from Serious Safeguarding Review
- Roles and Responsibilities

Click image to enlarge flyer or [view here](#)



BME Career Development Programme

The BME Career Development Programme for London is a transformative initiative designed by Whittington Health to enhance career opportunities aimed at all BME (Black and Minority Ethnic) staff across NHS organisations and the Primary Care. The programme is fully funded by Once4London Equity Initiatives for 50 participants across all NHS organisations and the Primary Care in London.

The programme content has been designed to provide participants with the essential skills and knowledge needed to succeed in career development and to build knowledge of the NHS. The training providers have been carefully selected based on their expertise in the modules.

Application deadline is **24th July**. More information on how to apply can be found in this [information booklet](#)

NWL Webinar: Autism Awareness Training for All Healthcare Professionals

-22nd September 13:00—14:00 [book here spaces available](#)

Our training is open to healthcare professionals at all levels — this will include GPs, Nurses, ARRS Clinical roles such as Pharmacists, Paramedics, ARRS non clinical roles such as Social Prescribers and Health & Wellbeing coaches, reception, admin and practice teams.

Motivational Interviewing Training

- 16th September, 9:00—16:00 [book here](#)

The course is open to multiple roles including: Social Prescribing Link Workers, Health & Wellbeing Coaches & Care Coordinators, Clinical Pharmacists, Pharmacy Technicians, Paramedics, Practice Nurses, Nurse Associates, FC Physios, Dieticians & Physician Associates.

This course will look to cover:

- An introduction to the principles, spirit and skills of motivational interviewing.
- Gain an overview of an effective alternative to persuade people to change their behaviour.
- Gain an appreciation of how people can use their own motivations to find solutions for behaviour change.
- Observe how reflective listening can help when emotions are running high.
- Discover how questions, reflections, affirmations and summaries can be used to facilitate a more effective conversation about behaviour change.

ARRS funded nurse roles

The recent release of the Primary Care Network Directed Enhanced Services (DES), confirmed the addition of other nurse roles now eligible for Additional Roles Reimbursement Scheme funding.

New to General Practice Nurses are now included and must be undertaking a GPN Trainee course. There are specific conditions, which will apply. [View more information in this flyer.](#)

We are currently recruiting new to General Practice Nurses across NWL to start the one year GPN Trainee programme in January 2026. These are all qualified nurses entering Primary Care. We need interested supporting practices/PCNs to work with now!

In addition, Practices should still receive the NHSE GPN Trainee Programme bursary - £20k for the one year academic course.

Please contact Sally Armstrong or Karen Sood at the NWL Training Hub, for more detail or to discuss further:

Sally Armstrong – Nurse Director, NWL Training Hub: sally.armstrong@nhs.net or **Karen Sood** – Senior Programme Lead, NWL Training Hub: karen.sood@nhs.net

Deprivation health: a master’s-level module for frontline impact

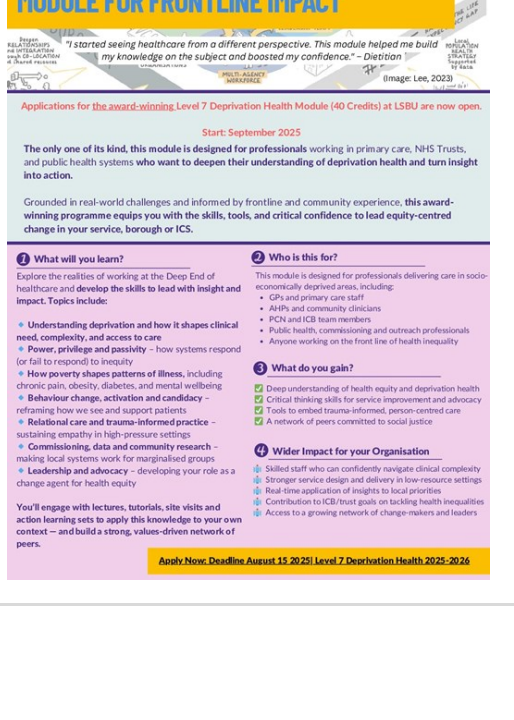
Applications for the award-winning Level 7 Deprivation Health Module (40 Credits) at LSBU are now open. Start: September 2025 [APPLY NOW](#)

The only one of its kind, this module is designed for professionals working in primary care, NHS Trusts, and public health systems who want to deepen their understanding of deprivation health and turn insight into action.

Grounded in real-world challenges and informed by frontline and community experience, this award winning programme equips you with the skills, tools, and critical confidence to lead equity-centred change in your service, borough or ICS.

This module is designed for professionals delivering care in socioeconomically deprived areas, including: GPs and primary care staff AHPs and community clinicians PCN and ICB team members Public health, commissioning and outreach professionals Anyone working on the front line of health inequality

[Find out what you will learn, gain and the impact for your organisation here: click to view the flyer](#)



Expressions of interest for PG Cert in Clinical Education

What is a PG Cert in Education?

The Post Graduate Certificate in Education is a year long course in a university and is all about learning how to teach, supervise, assess and evaluate within a Clinical setting. For example, you may want to become, or already are a Nurse Education Lead in your PCN. This course will give you an excellent foundation to develop your skills and knowledge and enable you to further your educational career.

Who is the Training for?

The funding is aimed at General Practice Nurses who want to become involved in the Education and Training of others in the clinical setting.

When does the course start and What is the time commitment?

The courses start in September and last a full academic year. You will probably need to take a day out of work a week to complete this course but this will not be the case for every week. You will also need to allow time at weekends etc to complete assignments.

What are the entry requirements?

You need to have studied to degree level in the past to study at a Post Graduate level.

How is it funded?

(Pending funding approval from WTE) There may be a limited budget to cover the cost of the course which is paid directly to the university. There may also be a limited bursary which will be provided to your employing practice for supervision and education support (and to possibly cover for when you are not working).

If you are interested in doing the PG Cert or would like more information, please complete [this EOI form](#) and send it charlottecooley@nhs.net and h.khaddour@nhs.net by the 31st July.

THIS WEEK

- **Gynaecological Update Webinars:** 22nd July 12:00—13:00 [book here spaces available](#)

- **Safeguarding Webinars–Young people, Families & Drug Use** - 23 July 13:00—14:00 [book here spaces available](#)

NWL TH Training

NWL Training Hub Webinars

Safeguarding Webinars

Please join our 1 hour Online Safeguarding webinars. A certificate of attendance will be provided when attending the FULL session this certificate can be counted towards your level 3 Safeguarding annual update. One or more session using the links provided below or [here by selecting the date from the drop down.](#)

Young people, Families & Drug Use

- 23 July 13:00—14:00 [book here spaces available](#)

Gynaecological Update Webinars

- 22nd July 12:00—13:00 [book here spaces available](#)

Gynaecological Pain: practical primary care management of pelvic pain, endometriosis and more

Delivered by : Dr Jeffrey Ahmed, Consultant Gynaecologist

NWL Women's Forum

- 19th September 13:00—14:00 [book here](#)

This session will cover menopause/Sexual and Reproductive Health (SRH) and have time for any questions you may have.

Future sessions: topics to be confirmed

-21st November 13:00—14:00 [book here](#)

-16th January 13:00—14:00 [book here](#)

-13th March 13:00—14:00 [book here](#)

NWL Webinar: Autism Awareness Training for All Healthcare Professionals

-22nd September 13:00—14:00 [book here spaces available](#)

Our training is open to healthcare professionals at all levels — this will include GPs, Nurses, ARRS Clinical roles such as Pharmacists, Paramedics, ARRS non clinical roles such as Social Prescribers and Health & Wellbeing coaches, Reception, admin and practice teams.

NWL IBD Webinar

- 23rd September, 12:00—13:00 [book here spaces available](#)

Comfort Okpeh is an Inflammatory Bowel Disease (IBD) Clinical Nurse Specialist (CNS) from St. Mark's Hospital. Comfort will deliver a session on top tips to consider when looking after a Crohn's Disease or Ulcerative Colitis patient in the community setting. Please join her to discuss and learn more about this growing chronic condition.

NWL Frailty Webinar for nurses

- 24th September, 13:00—14:00 [book here spaces available](#)

- What do we mean by frailty
- The role of the nurse in MDT working in Frailty
- How can you add value to a frailty consult and what does a good care plan look like
- What is Valida

NB Medical 'Hot Topics' Dermatology for Primary Care

- 8th October, 13:30—17:00 [book here spaces available](#)

This session will be open to Nurses and AHPs – nurses, paramedics, physios and qualified Nursing Associates

With dermatology appearing in up to 25% of our general practice consultations, now is a great time to update and refresh our knowledge. Many skin conditions are now being managed exclusively in primary care and our patients who do require a referral are facing significantly longer waiting times. The aim of this webinar is to increase your diagnostic skills and confidence in managing the common dermatology conditions we see in primary care. All the presented topics are based on recent national guidance and research, and use clinical cases to illustrate the learning points.

For queries about our NWL Training Hub webinars please contact nwl.traininghub@nhs.net

Enhanced Services and CPD

If all dates are fully booked for a training please join the waitlist, this allows us to know when there is sufficient demand for us to book new dates.

Non-Medical prescribing update

14th October, 9:00—12:30 [book here fully booked](#)

This session is suitable for any prescriber who would like an update on current issues in prescribing practice. It also offers an opportunity to network online with other prescribers.

Interpreting ECG - Foundation

- 17th October, 9:00 to 16:00 [book here](#) @ Harrow Baptist Church, HA1 1BA [spaces available](#)

This training is for GPs and ACPs only. Please be aware this is **not a refresher**.

Refresher Interpreting ECG

- 19th September 2025, 12:30 - 14:00 [book here spaces available](#)

This training is for GPs and ACPs who have already attended the Interpreting ECG course only.

Performing ECG Training

- 30th September 2025, 12:30 - 14:00 [book here](#) @ Harrow Baptist Church, HA1 1BA [fully booked](#)

This training is for HCAs, GPAs, pharmacists, nurses can attend if they require this training

Travel Health Updates

- 23rd October, 13:00—16:00 [book here fully booked](#)

- 4th November, 13:00—16:00 [book here fully booked](#)

This training is open to all trained Nursing and Pharmacist Immunisers. This training will be conducted over 3 hours online.

Please note: Travel Health updates for **experienced practitioners only** offering travel immunisations already. This session does not cover seasonal vaccines. Find out more details about what is covered [here](#).

Seasonal Immunisation Updates

- 21st August 13:00—16:15 [book here fully booked](#)

- 2nd September 9:00—12:15 [book here fully booked](#)

- 3rd September 9:00—12:15 [book here fully booked](#)

- 4th September 13:00—16:15 [book here fully booked](#)

- 9th September 13:00—16:15 [book here fully booked](#)

- 11th September 9:00—12:15 [book here fully booked](#)

- 16th September 13:00—16:15 [book here fully booked](#)

- 18th September 13:00—16:15 [book here fully booked](#)

- 23rd September 13:00—16:15 [book here fully booked](#)

- 25th September 13:00—16:15 [book here fully booked](#)

- 30th September 13:00—16:15 [book here fully booked](#)

- 1st October 13:00—16:15 [book here spaces available](#)

- 7th October 13:00—16:15 [book here fully booked](#)

This 3 hour online seasonal immunisation update is for all **experienced Health Care Professionals**; Nurses, Paramedics, Pharmacists, Nursing Associates, Pharmacy Techs and the non-registered workforce (which includes HCAs, HCSWs, Phlebotomists, receptionists etc) to deliver flu, pneumococcal, shingles, RSV and COVID vaccines. [Objectives for this update can be found here.](#)

Child Immunisation Updates

- 19th August 13:30—16:45 [book here limited spaces](#)

- 20th August 13:00—16:15 [book here spaces available](#)

- 2nd September 13:00—16:15 [book here spaces available](#)

- 3rd September 13:00—16:15 [book here spaces available](#)

- 4th September 13:00—16:15 [book here spaces available](#)

- 11th September 13:30—16:45 [book here limited spaces](#)

- 18th September 9:00—12:15 [book here spaces available](#)

- 25th September 9:00—12:15 [book here spaces available](#)

This updates for **experienced practitioners** (usually nurses, nursing associates and pharmacists) already delivering child immunisations.

Adult Phlebotomy

- 28th August, 9:15—16:30 [book here](#) @ Harrow Baptist Church, HA1 1BA [fully booked](#)

- 30th October 9:15—16:30 [book here](#) @ Harrow Baptist Church, HA1 1BA [fully booked](#)

This face to face session has been developed to allow learners the opportunity to practice their skills on high quality simulated arms.

Paediatric Phlebotomy

- 3rd September, 9:00—14:00 @ Cuckoo Lane Surgery, W7 1DR [join waitlist](#)

Assessment on 7th October 2024, you must attend both days to finalise course.

This training is for Nurses, HCAs & Phlebotomists. HCAs & Phlebotomists need to have a Care Certificate. Full eligibility criteria can be found at the above booking link.

The aim of this course is to provide the underpinning knowledge and basic skills to safely perform phlebotomy on babies and children from 2 years, and identify the underlying issues in paediatric Phlebotomy: e.g. consent, restraint, distraction and environment.

Advanced Diabetes Course

For GPNs and Pharmacists – you must have attended the foundation course before attending this advanced course.

GPs – please be sure to provide a summary of your diabetes related work undertaken. [Express your interest here](#)

Diabetes Foot Care Training

- 2nd October 9:15—16:30 [book here](#) @ Harrow Baptist Church, HA1 1BA [fully booked](#)

The course is for experienced HCSWs who will be assisting with diabetes reviews.

HCA 1 day - Diabetes Foundation Course for non-registered practitioners

- 8th September, 8:50—16:00 [book here fully booked](#)

This 3 hour online session for non-registered practitioners to get involved in both the prediabetes and diabetes pathways. They will gain an understanding of the care pathways for people with prediabetes and type 2 diabetes, the screening tasks involved and key lifestyle messages to help support people achieve their individual goals

Wound Care Training

- 12th August 9:15—16:30 [book here](#) @ Harrow Baptist Church, HA1 1BA [fully booked](#)

- 13th November 9:15—16:30 [book here](#) @ Harrow Baptist Church, HA1 1BA [fully booked](#)

This training is for HCSWs/HCAs who will be expected to undertake simple wound care procedures. This training is for HCAs with Care Certificates. GPN Trainees can attend and new to practice nurses can attend

Advanced Wound Care Training

- 4th September 9:15—16:30 [book here](#) @ Harrow Baptist Church, HA1 1BA [fully booked](#)

This session is aimed at HCAs who have some basic knowledge and experience of wound care and wish to extend their skills to be able to perform sutures and staple removal and take a swab correctly

Cervical Sample Taker Update

- 10th September 9:00—13:00 [book here fully booked](#)

- 24th September 9:00—13:00 [book here fully booked](#)

This update is for Registered Nurses, GPs, registered Physiotherapists, Nursing Associates who are registered with the NMC or registered paramedics working in GP practices, who have completed their cervical sample taking training in the past and who require the three yearly update.

Ring Pessary Foundation course

- 28th November, 9:00—12:00 [book here](#) @ The Irish Cultural Centre, W6 9DT [fully booked](#)

- 28th November, 13:00—16:00 [book here](#) @ The Irish Cultural Centre, W6 9DT [fully booked](#)

This course is for GPs & Nurses only. PAs who have been doing cervical screening smear for longer than a year can attend.

Enhanced Service Inhaler Technique: NWL CYP Asthma Tier 3 aligned Training

- Dates and locations dependant on borough [see all here](#)

Venue: Face to face session. Venues vary according to the borough.

This training is aimed at nurses/pharmacists/GPs but any AHP who does asthma and COPD chronic disease management.

This training is limited to **1 person per practice**. Please ensure you book onto the correct session for your borough.

ARRS Training Offers

Pitstop Foundation Level Diabetes Course

This course is now open to any ARRS clinical staff including Pharmacists, Paramedics, Physician Associate, Pharmacy Technician, Nurse Associate & Advanced Clinical Practitioners.

Staff who wish to attend must either [complete the EOI](#) or [email Jon Ord](#) with your: Name, Email, Role, GP Practice, PCN, Borough, Employer.

GP Assistant Structured Education programme

- Cohort starts 8th September, application deadline 8th August

[Download application form](#) and send completed form to - gpa@seltraininghub.co.uk operated by SE London Training Hub and the University of Greenwich

Motivational Interviewing Training

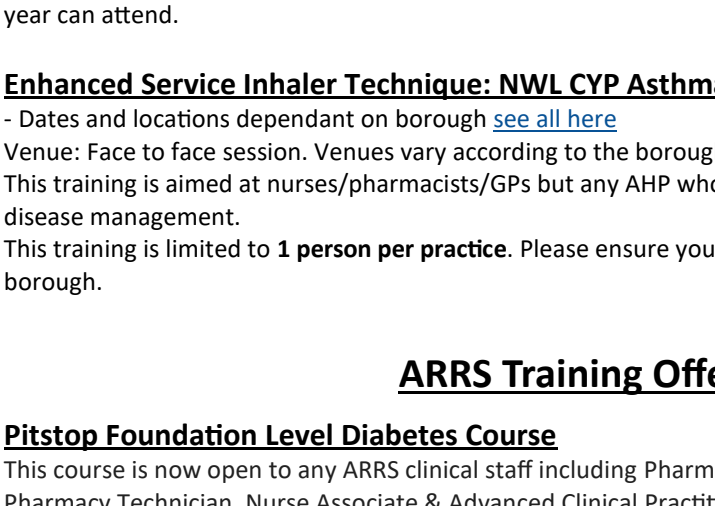
-16th September, 9:00—16:00 [book here](#)

The course is open to multiple roles including: Social Prescribing Link Workers, Health & Wellbeing Coaches & Care Coordinators, Clinical Pharmacists, Pharmacy Technicians, Paramedics, Practice Nurses, Nurse Associates, FC Physios, Dieticians & Physician Associates.

This course will look to cover:

- An introduction to the principles, spirit and skills of motivational interviewing.
- Gain an overview of an effective alternative to persuade people to change their behaviour.
- Gain an appreciation of how people can use their own motivations to find solutions for behaviour change.
- Observe how reflective listening can help when emotions are running high.
- Discover how questions, reflections, affirmations and summaries can be used to facilitate a more effective conversation about behaviour change.

Thank you from the NWL Training Hub Team



Follow us:



subscribe to our newsletter:
(scan or click the code)



Expressions of Interest forms

For some training we don't currently have training dates arranged, if this is training you would like please complete the relevant expression of interest form and we will be able to run training based on demand. Those who have expressed interest will also be notified when dates are arranged.

[Forms can all be found here](#)

Supervisor courses

NWL Training Hub holds a waitlist for both the multi-professional and GP Supervisor courses, if you would like to attend please complete the relevant application form.

Multi-professional Supervisor Course [Application form](#)

Complete the application form to be added to the waitlist for any future cohorts.

GP Supervisor Course [Application form](#)

Complete the application form to be added to the waitlist for the next cohorts.

[Pharmacy Educational Supervisor Training programme](#) – available via eLHF

Useful links and Resources

[Knowledge and Library Resources for GP and Practice Teams](#)

[Greener NHS – Resources for a more sustainable NHS](#)

[Survival Toolkit](#)