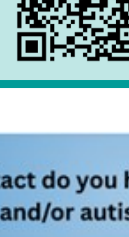


Follow us:



subscribe to our newsletter:

(scan or click the code)



News and Updates

Review and book all NWL Training Events:
nwltraininghub.co.uk/events/

Oliver McGowan Mandatory Training - Part 2

The Oliver McGowan Mandatory Training on Learning Disability and Autism is named after Oliver McGowan, whose preventable death highlighted the urgent need for better training across health and social care. Under the Health and Care Act 2022, all CQC-registered providers must ensure their staff receive learning disability and autism training that is appropriate to their role. Oliver McGowan Mandatory Training (OMMT) is the government's preferred and recommended autism and learning disability training for healthcare staff. Which tier of training you need to attend will depend on the nature of your role and how much you interact with patients. Ultimately your employer is responsible for confirming which tier is appropriate for your role. Both tiers are required to undertake two parts to complete this training, the parts are outlined below;

Tier 1
 This applies to staff with **indirect or occasional contact with patients**, i.e. non-patient facing roles.

Part 1: eLearning module which is live on eLH or NWL Learning Hub.
Part 2: A 1-hour online interactive session co-delivered by a person with a learning disability, an autistic person, and a facilitator.

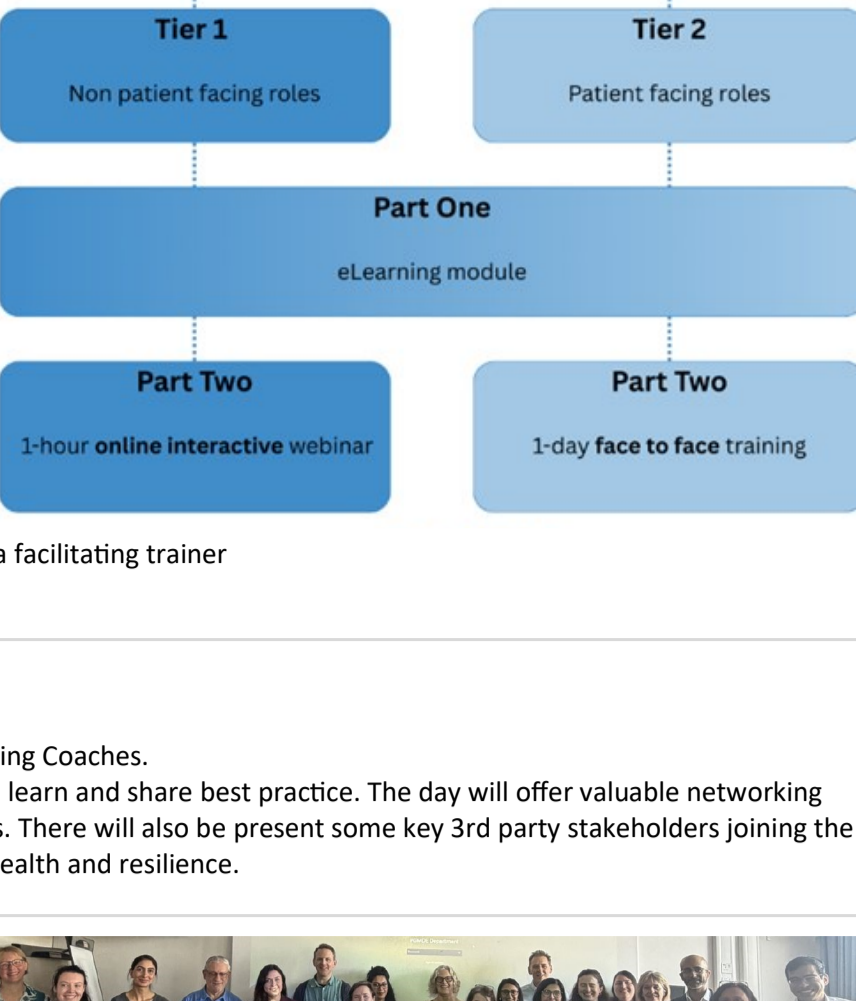
Tier 1, Part 2 – various dates and times from 31st March [book here](#)

Tier 2

This applies to staff with **regular or direct contact with patients**, i.e. patient facing roles. This include all staff who provide care, support or make decisions, this is not limited to clinical roles.

Part 1: eLearning module which is live on eLH or NWL Learning Hub.
Part 2: A 1-day face to face training co-delivered by a person with a learning disability, an autistic person and a facilitating trainer

Tier 2, Part 2 – various dates from 23rd April, in person [book here](#)



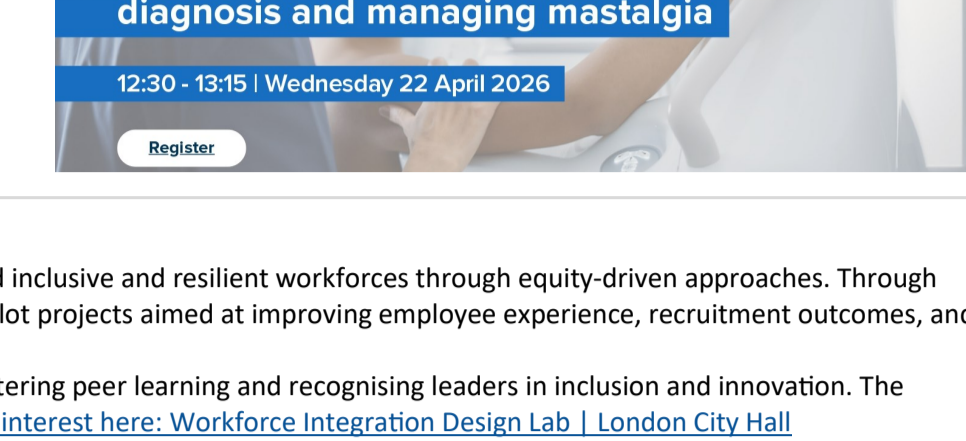
Personalisation Networking Day

- 6th March 2026, 10:00–14:30 @ St Pauls Church in Hammersmith, W6 9PJ [book here spaces available](#)
 Open to Social Prescribing Link Workers, Care Co-ordinators, Neighbourhood Navigators and Health & Wellbeing Coaches. Join us for a dedicated Personalisation Networking Day, bringing together colleagues and partners to connect, learn and share best practice. The day will offer valuable networking opportunities, updates on Neighbourhood Health Day, the latest ICB developments, alongside training updates. There will also be present some key 3rd party stakeholders joining the day. You'll also have the chance to take part in a range of wellbeing activities, designed to support your own health and resilience.

Fellowship Showcase Event

This week we invited our fellows to present on the work they have been able to undertake thanks to the fellowship programme. It was a great opportunity for the fellows to present, network and exchange ideas with colleagues who share their passion for improving care.

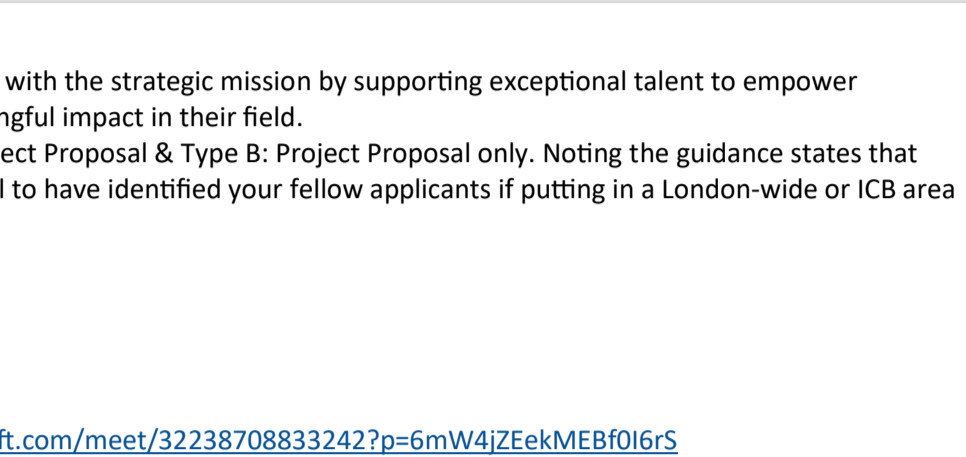
Thank you to all our fellows for their commitment, curiosity and generosity in sharing their learnings. The Fellowship Showcase is a powerful reminder of what becomes possible when people come together with purpose and enthusiasm. It reflects the best of what we can achieve collectively.



Supporting earlier breast cancer diagnosis and managing mastalgia

- 22nd April, 12:30–13:15 [book here](#)
 Learn from specialists on breast cancer during a free webinar and Q&A session, hosted by GatewayC – the leading earlier cancer diagnosis resource for primary care professionals. Designed by the NHS for the NHS, GatewayC offers free evidence-based courses, bite-sized cancer education, podcasts, webinars and more to support earlier and faster cancer diagnosis. Covering key questions such as:

- What are the common presentations of breast cancer in primary care?
- Which patient cohorts are considered at highest risk for developing breast cancer?
- What treatments are available for those with a significant familial predisposition to breast cancer?



Workforce Integration Design Lab

The Design Lab is a free and collaborative 10-month programme designed to help organisations build inclusive and resilient workforces through equity-driven approaches. Through cohort-level and organisation-specific workshops, as well as one-to-one coaching, participants will pilot projects aimed at improving employee experience, recruitment outcomes, and patient care for people from racially minoritised backgrounds.

The programme brings together best practice from across the NHS and London's growth sectors, fostering peer learning and recognising leaders in inclusion and innovation. The Design Lab is now open for applications for up to 10 NHS organisations to join. [You can register your interest here: Workforce Integration Design Lab | London City Hall](#)

NHSE Innovate-MD Fellowship Scheme 2026 applications open

The mission of these London Fellowships is to promote innovation, leadership, and progress, aligned with the strategic mission by supporting exceptional talent to empower individuals to advance knowledge, develop leadership skills, network, collaborate and make a meaningful impact in their field.

How to apply: [See guidance](#) noting the two types of applications e.g. Type A: Named Fellow and Project Proposal & Type B: Project Proposal only. Noting the guidance states that Type A Applications are the preferred route and may guarantee a better chance of success. (So useful to have identified your fellow applicants if putting in a London-wide or ICB area Project bid under Cat. B)

Key Timelines:
 Applications open: 23 February 2026 (6 week turnaround)
 Submissions deadline: 13 April 2026, 10:00 am
 Outcomes notified: 29 May 2026 (This date may be subject to change on occasion)
 Scheme commences: October 2026
 Innovate-MD webinar Q&A session is scheduled on 9 March 2026, 15:30 via: <https://teams.microsoft.com/teams/322387088332427p-6mW4j2EekMEBF0I6rS>
 This session will also be recorded and available after the event.
 We would encourage all to join the NHS Futures page asap to access all details, including the application forms
 Full details and the application forms are available on NHS Futures page here: [Application - Innovate MD Fellowships Programme - Futures](#)
 For all enquiries please contact: england.londonfellows@nhs.net
 The Innovate MD Fellowship Programme Team is:
 Dr Richard Bogle, Postgraduate System Dean - richard.bogle@nhs.net
 Cathy Juta, Senior Project Manager - c.juta@nhs.net

Information from NHSE WT&E on 2027-2028 Foundation Trainee Pharmacist Recruitment Scheme

Information is for **prospective employers who may wish to employ a Foundation Trainee Pharmacist** can be [found here](#)
 Please read the detailed guidance carefully, which includes links to relevant NHSE documents and contact email information.
 Details of February drop in sessions, where NHSE colleagues will be available to answer questions, are also included.
 Application deadline of **Tuesday 3rd March 2026 at Midday**.

NHSE Prescribing Infrastructure Project

The North West London Training Hub have been asked to undertake a piece of work in relation to Mapping and Training of current and prospective Designated Prescribing Practitioners (DPPs) and Designated Supervisors (DS) by NHS England WT&E colleagues.
 This piece of work will help to inform and build on capacity for Foundation Pharmacist Learning and Independent Prescribing Programmes across different parts of the NHS London system. [Clinical Pharmacist Designated Prescribing Practitioner Support Document](#)
 If the relevant Healthcare Professionals could complete the linked survey below, which should take approx. 10 mins maximum, if you have been or wish to be a DPP/DS – This includes Pharmacists, GPs, Nurses, Paramedics and other roles who are Independent Prescribers. <https://form.typeform.com/to/gkKGGdK0>

THIS WEEK

- **Contraception Training for Pharmacists** - 2nd & 9th March 2026, 9:30–17:00 [book here spaces available](#)
- **2026/27 GP contract changes** - 2nd March 17:00 [book here](#)
- **Children and Young People's Eating Disorders Services National Guidance Webinar** - 2nd March, 13:30–15:00 [book here](#)
- **Healthier Homes London** - 3rd to 5th Mar, [book here](#)
- **Blood cancers – recognising myeloma, leukaemia and lymphoma in primary care** - 3rd March, 13:00 [Registration here](#)
- **COVID-19 - Spring Summer 2026 Vaccination Campaign Training Webinar**- 3rd March 2026; 15:30-16:30 - [Provider Session #2](#)
- **COVID-19 - Spring Summer 2026 Vaccination Campaign Training Webinar**- 4th March 2026; 10:00-11:00 - [Provider Session #3](#)
- **Violence Prevention and Reduction National Webinar** - 4th March, 10:00–12:00 [book here](#)
- **Pan-London MedSIP Webinar: Reviewing Antipsychotics in People with a Learning Disability** - 4th March 12:00–13:00 [register here](#)
- **COVID-19 - Spring Summer 2026 Vaccination Campaign GP Practice - specific training** - 4th March 2026; 15:15-16:15 - [GP Practice Provider Session #3](#)
- **Delivering the Red Tape Challenge** - 5th March, 12:00–13:30 [book here](#)
- **Integrated Respiratory and Cardiovascular Care in Primary Care: Practical Management and Consultation Skills** - 5th March, 9:00–16:30 @ The Crown Hotel, NW2 3ED [book here](#)
- **Hypertension eMasterclass** - 5th March, 19:00 - 20:30 [book here](#)
- **COVID-19 - Spring Summer 2026 Vaccination Campaign GP Practice - specific training** - 5th March 2026; 19:00-19:45 - [GP Practice Provider Evening Session](#)
- **Preparing for Flu** - 5th March, 12:00–13:00 [book here](#)
- **North West London focus group on reducing harm from psychotropics** - 5th March, 13:00–14:00 [book here](#)
- **Personalisation Networking Day** - 6th March, 10:00–14:30 @ St Pauls Church in Hammersmith, W6 9PJ [book here spaces available](#)
- **Innovate-MD webinar Q&A session** 9th March, 15:30 via: <https://teams.microsoft.com/teams/322387088332427p-6mW4j2EekMEBF0I6rS>
- **COVID-19 - Spring Summer 2026 Vaccination Campaign Dedicated Federated Data Platform (FDP) access drop-in sessions** - 10th March 2026; 12:00-12:30 - [FDP Access Session #3](#)

NWL TH Training

NWL Training Hub Webinars

Safeguarding Webinar Series
Harm Reduction Drugs & Alcohol - must attend first session prior to attending 2nd session
 - part 1) 12th March, 13:00–14:00 [book here spaces available](#)
 - part 2) 25th March, 13:00–14:00 [book here spaces available](#)

NWL Women's Forum
 Topics to be confirmed
 - 13th March, 13:00–14:00 [book here spaces available](#)
 For queries about our NWL Training Hub webinars please contact nwl.traininghub@nhs.net

Enhanced Services and CPD

If all dates are **fully booked** for a training please join the waitlist, this allows us to know when there is sufficient demand for us to book new dates.

Deaf Awareness
 - 12th May, 9:30–12:30 [book here spaces available](#)
 Learning Outcomes
 • Identify the barriers that deaf and hard of hearing people face
 • List the ways in which deaf and hard of hearing people communicate
 • Understand and demonstrate how to implement positive methods of communication, and offer an equal service to deaf and hard of hearing people.
 • Apply the finger-spelling alphabet
 • Explore the deaf community & culture

Travel Health Updates
 - 14th April, 13:00–16:00 [book here fully booked](#)
 - 3rd June, 13:00–16:00 [book here fully booked](#)
 - 16th July, 13:00–16:00 [book here spaces available](#)
 - 7th October, 13:00–16:00 [book here spaces available](#)
 - 17th November, 13:00–16:00 [book here spaces available](#)
 Open to all trained Nursing and Pharmacist Immunisers (suitable for registered Nursing Associates and Pharmacy Technicians already doing child/travel immunisations but not suitable if they have not done any introductory training as not sufficient detail)
 3-hour online travel health updates for experienced practitioners; usually nurses and pharmacists, offering travel immunisations already.

Seasonal Immunisation Updates
 - 16 dates available from June to October 2026 [book here spaces available across most dates](#)
 3-hour online seasonal immunisation updates for all experienced Health Care Professionals; Nurses, Paramedics, HCAs, HCSWs, PHEbotomists, Pharmacy Technicians and the non-registered workforce (includes HCAs, HCSWs, PHEbotomists, receptionists etc) to deliver flu, pneumococcal, shingles, RSV and COVID vaccines.

Child Immunisation Updates
 - 18th March, 13:00–16:30 [book here fully booked](#)
 - 14th April, 13:00–16:30 [book here spaces available](#)
 - 11th May, 13:00–16:30 [book here spaces available](#)
 - 22nd July, 13:00–16:30 [book here spaces available](#)
 - 18th August, 13:00–16:30 [book here spaces available](#)
 - 23rd September, 13:00–16:30 [book here spaces available](#)
 - 8th October, 13:00–16:30 [book here spaces available](#)
 - 18th November, 13:00–16:30 [book here spaces available](#)
 3-hour online child immunisation updates for experienced practitioners; usually nurses, nursing associates and pharmacists, delivering child immunisations already.

Motivational Interviewing for Cardio-Renal Care – Live Online Interactive Study Day
 Attend either 1 full day:
 - 10th March, 9:00–16:00 [book here spaces available](#)
 - 14th April, 9:00–16:00 [book here spaces available](#)
 - 15th April, 9:00–16:00 [book here spaces available](#)
 - 21st April, 9:00–16:00 [book here spaces available](#)
 - 15th May, 9:00–16:00 [book here spaces available](#)
 - 19th June, 9:00–16:00 [book here spaces available](#)
 or two half day sessions:
 - 14th May, 9:00–12:45, & 20th May, 9:00–12:45 [book group 5 here spaces available](#)
 - 14th May, 9:00–12:45 & 20th May, 13:15–17:00 [book group 6 here spaces available](#)
 - 14th May, 13:15–17:00 & 20th May, 9:00–12:45 [book group 7 here spaces available](#)
 - 14th May, 13:15–17:00 & 20th May, 13:15–17:00 [book group 8 here spaces available](#)
 This training is for: GPs, Nurses, ARRS staff, Allied Health Professionals, Cardio-renal teams (clinical & non-clinical)
 If you spend your time telling people what they should / could / need to do — this is for you. This is a live, online, interactive training for the whole cardio-renal team — from non-clinical staff to senior clinicians. Practical focus. Real scenarios. No death-by-PowerPoint. No awkward role play.

Anticoagulation Update Training
 - 16th March, 13:00–16:00 [book here fully booked](#)
 This training provides an update for staff involved in anticoagulation monitoring (Nurses, Nursing Associates, Health Care Support Workers, Pharmacists, and GPs). It is intended for those with prior experience who need a refresher. Topics include:
 • **Warfarin:** Do's and don'ts of INR management, normal ranges, actions for high/low INR, LMWH use (when, why), and patient education.
 • **DOACs:** Do's and don'ts, initiation, monitoring, patient education, and dose reduction per guidelines.

Performing ECG Training
 - 17th June, 9:15–16:30 [book here](#) @ Harrow Baptist Church, HA1 1BA [fully booked](#)
 This training is for HCAs, GPAs, pharmacists, nurses can attend if they require this training

ECG Interpretation Foundation – a face to face session for GPs & ACPs.
 - 6th March, 9:00–16:00 [book here](#) @ Harrow Baptist Church, HA1 1BA [spaces available](#)
 - 27th November, 9:00–16:00 [book here](#) @ Harrow Baptist Church, HA1 1BA [spaces available](#)
 This is for GPs and ACPs who haven't already attended the interpreting ECG course.

Refresher Interpreting ECG course
 - 27th March, 12:30–14:00 [book here spaces available](#)
 - 18th September, 12:30–14:00 [book here spaces available](#)
 The refresher ECG course re-introduces a systematic approach for GPs who interpret ECGs to adopt a system that ensures every ECG is interpreted correctly every time. The focus will be on common scenarios that cause concern in primary care with a focus on red-flag ECGs. This course is for GPs and ACPs who have already attended the interpreting ECG course

Adult Phlebotomy
 - 29th April, 9:15–16:30 [book here](#) @ Dawes Road Hub, SW6 7EN [limited spaces](#)
 - 18th March, 9:15–16:30 [book here](#) @ Harrow Baptist Church, HA1 1BA [spaces available](#)
 - 8th August, 9:15–16:30 [book here](#) @ Dawes Road Hub, SW6 7EN [spaces available](#)
 - 7th October, 9:15–16:30 [book here](#) @ Dawes Road Hub, HA1 1BA [spaces available](#)
 - 3rd December, 9:15–16:30 [book here](#) @ Harrow Baptist Church, SW6 7EN [spaces available](#)
 This face to face session has been developed to allow learners the opportunity to practice their skills on high quality simulated arms.

Paediatric Phlebotomy
 - 20th May, 9:00–14:00 @ Cuckoo Lane Surgery, W7 1DR [apply here fully booked](#)
 You must attend the training day and assessment day to finalise course the assessment date for each of the above training cohorts can be found on the Medtribe page for each cohort. This training is for Nurses, HCAs & Phlebotomists. HCAs & Phlebotomists need to have a Care Certificate. Full eligibility criteria can be found at the above booking link.
 The aim of this course is to provide the underpinning knowledge and basic skills to safely perform phlebotomy on babies and children from 2 years, and identify the underlying issues in paediatric phlebotomy. e.g. consent, restraint, distraction and environment.

Diabetes Foot Care
 - 3rd June, 9:15–16:30 [book here](#) @ Dawes Road Hub, SW6 7EN [limited spaces](#)
 The course is for experienced HCSWs who will be assisting with diabetes reviews

1 day Diabetes Foundation Course for non-registered practitioners
 - 16th March, 8:50–16:00 [book here fully booked](#)
 This course focuses on preparing non-registered practitioners to get involved in both the prediabetes and diabetes pathways. They will gain an understanding of the care pathways for people with prediabetes and type 2 diabetes, the screening tasks involved and key lifestyle messages to help support people achieve their individual goals. You can also attend the course if you are non-registered practitioner who requires diabetes update.

Advanced Diabetes Course
 For GPNs and Pharmacists – you must have attended the foundation course attending this advanced course
 GPs – please be sure to provide a summary of your diabetes related work undertaken. [Express your interest here](#)

Wound Care Training
 - 18th March, 9:15–16:30 [book here](#) @ Harrow Baptist Church, HA1 1BA [fully booked](#)
 - 9th July, 9:15–16:30 [book here](#) @ Dawes Road Hub, SW6 7EN [fully booked](#)
 This training is for HCSWs/HCAs who will be expected to undertake simple wound care procedures. This training is for HCAs with Care Certificates. GPN Trainees can attend and new to practice nurses can attend

Advanced Wound Care Training for HCAs
 - 5th March, 9:15–16:30 [book here](#) @ Harrow Baptist Church, HA1 1BA [fully booked](#)
 - 4th August, 9:15–16:30 [book here](#) @ Dawes Road Hub, SW6 7EN [limited spaces](#)
 This session is aimed at HCAs who have some basic knowledge and experience of wound care and wish to extend their skills to be able to perform suture and staple removal and take a swab correctly.

Wound Care Update For Nurses
 - 24th March, 12:00–16:00 [book here fully booked](#)
 The session will cover:
 • Wound preparation, assessment, dressing, and compression
 • Burns management
 • MARSII (Medical Adhesive–Related Skin Injury)

Ring Pessary Foundation course
 - 19th March, 9:00–12:00 [book here](#) @ Dawes Road Hub, SW6 7EN [fully booked](#)
 - 15th March, 9:00–12:00 [book here](#) @ Dawes Road Hub, SW6 7EN [fully booked](#)
 - 8th October, 9:00–12:00 [book here](#) @ Dawes Road Hub, SW6 7EN [limited spaces](#)
 - 8th October, 13:00–16:00 [book here](#) @ Dawes Road Hub, SW6 7EN [limited spaces](#)
 This course is for GPs & Nurses only. PAs who have been doing cervical screening smear for longer than a year can attend.

Ring Pessary Update
 - 16th May, 9:00–12:00 [book here spaces available](#)
 - 26th June, 13:00–16:00 [book here fully booked](#)
 This training is an update - for those who already finalised their Ring Pessary training

Dyslexia education workshops FOR NURSES
 - 8th April, 13:00–16:00 [book here spaces available](#)
 • Definition of dyslexia
 • Common features of dyslexia
 • Identifying dyslexia
 • The rights of people with dyslexia

2-Day Introduction To Contraception course
 - 21st May & 22nd May, 9:30 - 16:30 [book here spaces available](#)
 Course is suitable for nurses, qualified NAs, paramedics & GPs
 This course is aimed at qualified staff who are new to practice and want an overview of all contraceptive methods, or for staff who have completed a contraceptive course before and want a full update on contraception.

Cervical Sample Taker Update
 - 23rd April, 9:30–12:30 [book here limited spaces](#)
 - 9th October, 13:30–16:30 [book here spaces available](#)
 Course is suitable for: Registered Nurses, Doctor, Midwife or registered physician associate, nursing associates who are registered with the NMC, registered paramedics working in GP practice, who have completed their cervical sample training in the past and who require the three yearly update

ARRS Training Offers

Contraception Training for Pharmacists
 - 2nd & 9th March, 9:30–17:00 [book here spaces available](#)
 The course will look to cover:
 • An introduction to contraceptive counselling and management within General Practice. This course will improve understanding of the safe counselling and administration of the different contraceptive methods able to offer.
 • Clinician's will be able to understand their level of clinical competency in offering this within their current role and contraception offered within General Practice.
 • This training will enable practitioners to understand the most commonly used contraception, and to be able to give safe and tailored care to patients.

Personalisation Networking Day
 - 6th March, 10:00–14:30 @ St Pauls Church in Hammersmith, W6 9PJ [book here spaces available](#)
 Open to Social Prescribing Link Workers, Care Co-ordinators, Neighbourhood Navigators and Health & Wellbeing Coaches.
 This is the 3rd Personalisation Networking Day. Join us for a dedicated Personalisation Networking Day, bringing together colleagues and partners to connect, learn and share best practice.
 The day will offer valuable networking opportunities, updates on Neighbourhood Health and the latest ICB developments, alongside training updates. There will also be present some key 3rd party stakeholders joining the day. You'll also have the chance to take part in a range of wellbeing activities, designed to support your own health and resilience.

ARRS 2 Day Foundation Health Coaching Course
 Building on previous work the past 3 years, the NW London Training Hub are working with provider Peak Health Coaching to provide the PCI approved core required 2-day health & role coaching programme for the new to role Social Prescribing Link workers and Care Co-ordinators. Due to requests for development, the 2-day Foundation Health Coaching course will now also be opened up to additional clinical roles - **Clinical Pharmacist, Dieticians, FC Physiotherapists, Physician Associate & Paramedics** to aid in these roles support of all of these roles, so please only apply if it is relevant to your daily practice due to funding limitations.
 The 4 Day Intermediate Health Coaching course required for Health & Wellbeing Coaches new to role, may still be available so please email directly to enquire about this.
 To apply for a space please [complete the FOI form](#) or if you have any further questions around recruitment, please contact Jon Ord – NWL ARRS Programme Officer – jonathan.ord@nhs.net.

Pitstop Foundation Level ARRS Course
 This course is now open to any ARRS clinical staff including Pharmacists, Practice Nurses, Paramedics, Physician Associate, Pharmacy Technician, Nurse Associate & Advanced Clinical Practitioners.
 Staff who wish to attend must either [complete the FOI](#) or [email Jon Ord](#) with your: Name, Email, Role, GP Practice, PCN, Borough, Employer.

Thank you from the NWL Training Hub Team

Expressions of Interest forms

For some training we don't currently have training dates arranged, if this is training you would like please complete the relevant expression of interest form and we will be able to run training based on demand. Those who have expressed interest will also be notified when dates are arranged.
[Forms can all be found here](#)

Supervisor courses

NWL Training Hub holds a waitlist for both the multi-professional and GP Supervisor courses. If you would like to attend please complete the relevant application form.

- Multi-professional Supervisor Course Application form**
 Complete the application form to be added to the waitlist for any future cohorts
- GP Supervisor Course Application form**
 Complete the application form to be added to the waitlist for the next cohorts.
- Pharmacy Educational Supervisor Training programme** – available via eLH

Useful links and Resources

- [Knowledge and Library Resources for GP and Practice Teams](#)
- [Greener NHS – Resources for a more sustainable NHS](#)
- [Survival Toolkit](#)
- [Supported Return to Training](#)
- [Podcast Learning Library](#)
- [Primary Care Resources](#)
- [GP Resources](#)
- [Webinar Recordings](#)

Training & Events run on behalf of NWL TH

Transgender Healthcare for Clinical Staff - 12:00pm – 1:30pm
[Click here to register for the training for clinical staff](#)
 Session 1 – 22nd April and 15th June
 Session 2 – 29th April and 22nd June

Transgender Healthcare for Non Clinical Staff - 12:00pm – 1:30pm
[Click here to register for the training for non-clinical staff](#)
 Session 1 – 16th March, 13th May and 6th July
 Session 2 – 23rd March, 20th May and 13th July

Migraine Update: New Guidance & Prescribing Options
 - 19th March 2026, 13:00 – 14:00 [join here](#) or via Teams ID: 312 199 766 940 95 and Passcode: 55x2GD3y
 Join Imperial Consultant Neurologist Dr Sam Dahdaleh alongside NWL experts for a review of the new migraine guidance – hot off the press! Run by RIPEN – West London Training Hub. What to expect:
 • Latest migraine guidance
 • Up-to-date prescribing options for Primary Care
 • Interactive Q